

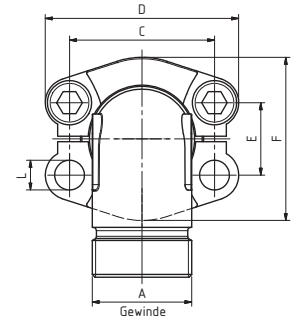
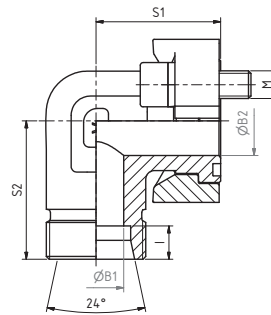
| | | |
|--|----------------------------|------------------------------------|
| Bestellbezeichnung: ordering code: | S355J2^{*1} | 1.4404^{*1} 316L |
| • nur 90° Zwischenstück only 90° elbow | WFG-... | WFG-X-... |
| • incl. Flanschhälften, Schraubensatz und O-Ring including split flanges, bolts and o-ring | WFG-...M | WFG-X-...MX |
| • incl. Flanschhälften, Schrauben- satz, O-Ring, Schneidring und Überwurfmutter including split flanges, bolts, o-ring, cutting ring and nut | WFG-...MM | WFG-X-...MMX |

DIN 3901
Bohrungsform W / Drill form W

| maximaler Betriebsdruck maximum recommended working pressure | S.A.E. Baugröße nominal flange size | Typ type | Abmessungen dimensions | | | | | | | | | | | Schrauben bolts | Gewicht weight | |
|---|--|--------------|---|----|----|------|-----|------|----|------|-------|-----|----|--------------------|-------------------|---|
| | | | A | B1 | B2 | C | D | E | F | I | L | S1 | S2 | | | M |
| kg/cm ² | inch | | | | | | | | | | | | | | | |
| Schraube Festigkeitskl. | | | Standarddruckreihe / Standard pressure | | | | | | | | | | | | | |
| 10.9 | | | | | | | | | | | | | | | | |
| 315 | 1/2" | WFG 3001/L15 | M 22x1,5 | 12 | 11 | 38,1 | 54 | 17,5 | 46 | 7,0 | 8,50 | 39 | 36 | M 8x25 | 0,39 | |
| 350 | 1/2" | WFG 3001/S16 | M 24x1,5 | 12 | 12 | 38,1 | 54 | 17,5 | 46 | 8,5 | 8,50 | 39 | 38 | M 8x25 | 0,43 | |
| 315 | 3/4" | WFG 3002/L18 | M 26x1,5 | 15 | 19 | 47,6 | 65 | 22,3 | 52 | 7,5 | 10,50 | 42 | 39 | M 10x30 | 0,63 | |
| 160 | 3/4" | WFG 3002/L22 | M 30x2 | 19 | 19 | 47,6 | 65 | 22,3 | 52 | 7,5 | 10,50 | 42 | 41 | M 10x30 | 0,66 | |
| 350 | 3/4" | WFG 3002/S20 | M 30x2 | 16 | 19 | 47,6 | 65 | 22,3 | 52 | 10,5 | 10,50 | 42 | 43 | M 10x30 | 0,71 | |
| 350 | 3/4" | WFG 3002/S25 | M 36x2 | 17 | 19 | 47,6 | 65 | 22,3 | 52 | 12,0 | 10,50 | 42 | 45 | M 10x30 | 0,84 | |
| 160 | 1" | WFG 3003/L28 | M 36x2 | 24 | 25 | 52,4 | 70 | 26,2 | 59 | 7,5 | 10,50 | 45 | 44 | M 10x30 | 0,82 | |
| 320 | 1" | WFG 3003/S25 | M 36x2 | 20 | 25 | 52,4 | 70 | 26,2 | 59 | 12,0 | 10,50 | 45 | 50 | M 10x30 | 0,94 | |
| 320 | 1" | WFG 3003/S30 | M 42x2 | 24 | 25 | 52,4 | 70 | 26,2 | 59 | 13,5 | 10,50 | 45 | 47 | M 10x30 | 1,02 | |
| 160 | 1 1/4" | WFG 3004/L35 | M 45x2 | 30 | 27 | 58,7 | 79 | 30,2 | 73 | 10,5 | *2 | 50 | 57 | *3 | 1,19 | |
| 280 | 1 1/4" | WFG 3004/S25 | M 36x2 | 20 | 27 | 58,7 | 79 | 30,2 | 73 | 12,0 | *2 | 50 | 55 | *3 | 1,40 | |
| 280 | 1 1/4" | WFG 3004/S30 | M 42x2 | 25 | 27 | 58,7 | 79 | 30,2 | 73 | 13,5 | *2 | 50 | 57 | *3 | 1,48 | |
| 280 | 1 1/4" | WFG 3004/S38 | M 52x2 | 28 | 27 | 58,7 | 79 | 30,2 | 73 | 16,0 | *2 | 50 | 59 | *3 | 1,55 | |
| 160 | 1 1/2" | WFG 3005/L42 | M 52x2 | 36 | 36 | 69,9 | 94 | 35,7 | 83 | 11,0 | 13,30 | 55 | 58 | M 12x35 | 1,97 | |
| 210 | 1 1/2" | WFG 3005/S38 | M 52x2 | 32 | 32 | 69,9 | 94 | 35,7 | 83 | 16,0 | 13,30 | 55 | 64 | M 12x35 | 2,12 | |
| 160 | 2" | WFG 3006/L42 | M 52x2 | 36 | 45 | 77,8 | 102 | 42,9 | 97 | 11,0 | 13,30 | 108 | 80 | M 12x35 | 2,69 | |
| 200 | 2" | WFG 3006/S38 | M 52x2 | 32 | 45 | 77,8 | 102 | 42,9 | 97 | 16,0 | 13,30 | 108 | 80 | M 12x35 | 2,77 | |

Oberfläche: CR-6: auslaufend/Neu: CR-6 frei / surface: CR-6: phase-out/Neu: CR-6 free
^{*1} oder vergleichbare Güte / or comparable material
^{*2} Schraubenbohrung 10,50, 12,00 oder 12,75 / Bolt housing of 10.50, 12.00 or 12.75
^{*3} wahlweise M 10x30 oder M 12x35 / choice of M 10x30 or M 12x35

Hinweis: Der angegebene Nenndruck ist nach der SAE J 518 C durch den Flansch bzw. nach der Verschraubung nach DIN 3861 festgelegt. / **Please note:** The maximum working pressure is fixed by SAE J 518 C on flange side or by the thread side to DIN 3861.



| | | |
|--|----------------------------|------------------------------------|
| Bestellbezeichnung: ordering code: | S355J2^{*1} | 1.4404^{*1} 316L |
| • nur 90° Zwischenstück only 90° elbow | WFG-... | WFG-X-... |
| • incl. Flanschhälften, Schraubensatz und O-Ring including split flanges, bolts and o-ring | WFG-...M | WFG-X-...MX |
| • incl. Flanschhälften, Schrauben- satz, O-Ring, Schneidring und Überwurfmutter including split flanges, bolts, o-ring, cutting ring and nut | WFG-...MM | WFG-X-...MMX |

DIN 3901
Bohrungsform W / Drill form W

| maximaler Betriebsdruck maximum recommended working pressure | S.A.E. Baugröße nominal flange size | Typ type | Abmessungen dimensions | | | | | | | | | | | Schrauben bolts | Gewicht weight | | |
|---|--|------------------|--------------------------------|----|----|------|-----|------|-----|------|-------|-----|----|--------------------|-------------------|---|----|
| | | | A | B1 | B2 | C | D | E | F | I | L | S1 | S2 | | | M | kg |
| kg/cm ² | inch | | | | | | | | | | | | | | | | |
| Schraube Festigkeitskl. 10.9 | | | Hochdruckreihe / High pressure | | | | | | | | | | | | | | |
| 420 | 1/2" | WFG 6001/S16 | M 24x1,5 | 12 | 12 | 40,5 | 56 | 18,2 | 48 | 8,5 | 8,50 | 39 | 38 | M 8x30 | 0,69 | | |
| 420 | 3/4" | WFG 6002/S16 | M 24x1,5 | 12 | 17 | 50,8 | 71 | 23,8 | 60 | 8,5 | 10,50 | 48 | 45 | M 10x35 | 0,92 | | |
| 420 | 3/4" | WFG 6002/S20 | M 30x2 | 16 | 17 | 50,8 | 71 | 23,8 | 60 | 10,5 | 10,50 | 48 | 46 | M 10x35 | 0,96 | | |
| 420 | 3/4" | WFG 6002/S25 | M 36x2 | 17 | 17 | 50,8 | 71 | 23,8 | 60 | 12,0 | 10,50 | 48 | 48 | M 10x35 | 1,09 | | |
| 420 | 1" | WFG 6003/S25 | M 36x2 | 20 | 24 | 57,2 | 81 | 27,8 | 70 | 12,0 | 13,30 | 60 | 53 | M 12x45 | 1,60 | | |
| 420 | 1" | WFG 6003/S30 | M 42x2 | 24 | 24 | 57,2 | 81 | 27,8 | 70 | 13,5 | 13,30 | 60 | 55 | M 12x45 | 1,70 | | |
| 420 | 1 1/4" | WFG 6004/S25 | M 36x2 | 20 | 31 | 66,7 | 95 | 31,8 | 78 | 12,0 | 14,60 | 68 | 58 | M 14x50 | 2,08 | | |
| 420 | 1 1/4" | WFG 6004/S25-M12 | M 36x2 | 20 | 31 | 66,7 | 95 | 31,8 | 78 | 12,0 | 13,30 | 68 | 58 | M 12x45 | 2,1 | | |
| 420 | 1 1/4" | WFG 6004/S30 | M 42x2 | 25 | 31 | 66,6 | 95 | 31,8 | 78 | 13,5 | 14,60 | 68 | 58 | M 14x50 | 2,22 | | |
| 420 | 1 1/4" | WFG 6004/S30-M12 | M 42x2 | 25 | 31 | 66,6 | 95 | 31,8 | 78 | 13,5 | 13,30 | 68 | 58 | M 12x45 | - | | |
| 350 | 1 1/4" | WFG 6004/S38 | M 52x2 | 28 | 31 | 66,6 | 95 | 31,8 | 78 | 16,0 | 14,60 | 68 | 63 | M 14x50 | 2,32 | | |
| 350 | 1 1/4" | WFG 6004/S38-M12 | M 52x2 | 28 | 31 | 66,6 | 95 | 31,8 | 78 | 16,0 | 13,30 | 68 | 63 | M 12x45 | - | | |
| 350 | 1 1/2" | WFG 6005/S30 | M 42x2 | 25 | 36 | 79,3 | 113 | 36,5 | 95 | 13,5 | 16,80 | 76 | 72 | M 16x55 | 3,30 | | |
| 350 | 1 1/2" | WFG 6005/S38 | M 52x2 | 30 | 36 | 79,3 | 113 | 36,5 | 95 | 16,0 | 16,80 | 76 | 72 | M 16x55 | 3,55 | | |
| 315 | 2" | WFG 6006/S38 | M 52x2 | 32 | 45 | 96,8 | 133 | 44,5 | 114 | 13,5 | 21,00 | 108 | 80 | M 20x70 | 2,46 | | |

Oberfläche: CR-6: auslaufend/Neu: CR-6 frei / surface: CR-6: phase-out/Neu: CR-6 free
^{*1} oder vergleichbare Güte / or comparable material
^{*2} Schraubenbohrung 10,75, 12,00 oder 12,75 / Bolt housing of 10.75, 12.00 or 12.75
^{*3} wahlweise M 10x30 oder M 12x35 / choice of M 10x30 or M 12x35

Hinweis: Der angegebene Nenndruck ist nach der SAE J 518 C durch den Flansch bzw. nach der Verschraubung nach DIN 3861 festgelegt. / **Please note:** The maximum working pressure is fixed by SAE J 518 C on flange side or by the thread side to DIN 3861.