

| | | |
|--|-----------------------------------|------------------------------------|
| Bestellbezeichnung: ordering code: | S355J2^{*1} C22 | 1.4404^{*1} 316L |
| • nur Zwischenstück adaptor only | SFCE-... | SFCE-X-... |
| • incl. Flanschhälften, metrischem Schraubensatz und O-Ring (Mutter und Schneidring) including split flanges, metric bolts and o-ring (nut and cutting ring) | SFCE-...M(M) | SFCE-X-...MX(M) |
| • incl. Flanschhälften, UNC-Schraubensatz und O-Ring (Mutter und Schneidring) including split flanges, UNC bolts and o-ring (nut and cutting ring) | SFCE-...U(M) | SFCE-X-...UX(M) |

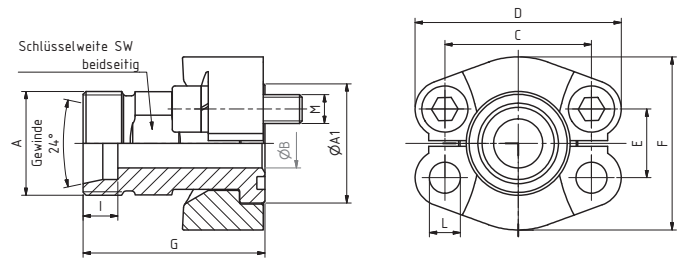
DIN 3901
Bohrungsform W / Drill form W

| maximaler Betriebsdruck maximum recommended working pressure | S.A.E. Baugröße nominal flange size | Typ type | Abmessungen dimensions | | | | | | | | | | | Schrauben bolts | | Gewicht weight | | |
|---|--|---------------|--|------|-------|------|-----|------|----|------|------|----|-------|-----------------|--------------|----------------|----|--|
| | | | A | A1 | B | C | D | E | F | G | I | SW | L | M | unc. | | kg | |
| kg/cm ² | inch | | | | | | | | | | | | | | | | | |
| Schraube Festigkeitskl. | | | Standarddruckreihe / Standard pressure | | | | | | | | | | | metr. | | unc. | | |
| 10.9 | | | | | | | | | | | | | | | | | | |
| 315 | 1/2" | SFCE 3001/L15 | M 22x1,5 | 30,2 | 12 | 38,1 | 54 | 17,5 | 46 | 48,2 | 7,0 | 24 | 8,50 | M 8x25 | 5/16 x 1 1/4 | 0,29 | | |
| 350 | 1/2" | SFCE 3001/S16 | M 24x1,5 | 30,2 | 12 | 38,1 | 54 | 17,5 | 46 | 50,2 | 8,5 | 24 | 8,50 | M 8x25 | 5/16 x 1 1/4 | 0,32 | | |
| 315 | 3/4" | SFCE 3002/L18 | M 26x1,5 | 38,1 | 15/17 | 47,6 | 65 | 22,3 | 52 | 53,2 | 7,5 | 30 | 10,50 | M 10x30 | 3/8 x 1 1/2 | 0,55 | | |
| 160 | 3/4" | SFCE 3002/L22 | M 30x2 | 38,1 | 19 | 47,6 | 65 | 22,3 | 52 | 53,2 | 7,5 | 30 | 10,50 | M 10x30 | 3/8 x 1 1/2 | 0,56 | | |
| 160 | 3/4" | SFCE 3002/L28 | M 36x2 | 38,1 | 19 | 47,6 | 65 | 22,3 | 52 | 53,2 | 7,5 | 30 | 10,50 | M 10x30 | 3/8 x 1 1/2 | 0,75 | | |
| 350 | 3/4" | SFCE 3002/S20 | M 30x2 | 38,1 | 16/17 | 47,6 | 65 | 22,3 | 52 | 57,2 | 10,5 | 30 | 10,50 | M 10x30 | 3/8 x 1 1/2 | 0,63 | | |
| 350 | 3/4" | SFCE 3002/S25 | M 36x2 | 38,1 | 17 | 47,6 | 65 | 22,3 | 52 | 57,2 | 12,0 | 30 | 10,50 | M 10x30 | 3/8 x 1 1/2 | 0,76 | | |
| 160 | 1" | SFCE 3003/L28 | M 36x2 | 44,5 | 24 | 52,4 | 70 | 26,2 | 59 | 54,2 | 7,5 | 36 | 10,50 | M 10x30 | 3/8 x 1 1/2 | 0,69 | | |
| 320 | 1" | SFCE 3003/S25 | M 36x2 | 44,5 | 20 | 52,4 | 70 | 26,2 | 59 | 58,2 | 12,0 | 36 | 10,50 | M 10x30 | 3/8 x 1 1/2 | 0,78 | | |
| 320 | 1" | SFCE 3003/S30 | M 42x2 | 44,5 | 24 | 52,4 | 70 | 26,2 | 59 | 63,2 | 13,5 | 36 | 10,50 | M 10x30 | 3/8 x 1 1/2 | 0,91 | | |
| 160 | 1 1/4" | SFCE 3004/L28 | M 36x2 | 50,8 | 24/27 | 58,7 | 79 | 30,2 | 73 | 58,2 | 7,5 | 36 | *2 | *3 | 7/16 x 1 1/2 | 1,05 | | |
| 160 | 1 1/4" | SFCE 3004/L35 | M 45x2 | 50,8 | 30/32 | 58,7 | 79 | 30,2 | 73 | 58,2 | 10,5 | 41 | *2 | *3 | 7/16 x 1 1/2 | 1,10 | | |
| 280 | 1 1/4" | SFCE 3004/S25 | M 36x2 | 50,8 | 20/27 | 58,7 | 79 | 30,2 | 73 | 60,2 | 12,0 | 41 | *2 | *3 | 7/16 x 1 1/2 | 1,17 | | |
| 280 | 1 1/4" | SFCE 3004/S30 | M 42x2 | 50,8 | 25/28 | 58,7 | 79 | 30,2 | 73 | 62,2 | 13,5 | 41 | *2 | *3 | 7/16 x 1 1/2 | 1,19 | | |
| 280 | 1 1/4" | SFCE 3004/S38 | M 52x2 | 50,8 | 28 | 58,7 | 79 | 30,2 | 73 | 66,2 | 16,0 | 46 | *2 | *3 | 7/16 x 1 1/2 | 1,39 | | |
| 160 | 1 1/2" | SFCE 3005/L42 | M 52x2 | 60,3 | 36 | 69,9 | 94 | 35,7 | 83 | 64,2 | 11,0 | 46 | 13,30 | M 12x35 | 1/2 x 1 1/2 | 1,34 | | |
| 210 | 1 1/2" | SFCE 3005/S38 | M 52x2 | 60,3 | 32 | 69,9 | 94 | 35,7 | 83 | 70,2 | 16,0 | 46 | 13,30 | M 12x35 | 1/2 x 1 1/2 | 1,50 | | |
| 160 | 2" | SFCE 3006/L42 | M 52x2 | 71,4 | 36/51 | 77,8 | 102 | 42,9 | 97 | 80 | 11 | 46 | 13,3 | M 12x35 | 1/2 x 1 1/2 | 1,51 | | |
| 210 | 2" | SFCE 3006/S38 | M 52x2 | 71,4 | 32/51 | 77,8 | 102 | 42,9 | 97 | 80 | 16 | 46 | 13,3 | M 12x35 | 1/2 x 1 1/2 | 1,51 | | |

Oberfläche: CR-6: auslaufend/Neu: CR-6 frei / surface: CR-6: phase-out/New: CR-6 free
*1 oder vergleichbare Güte / or comparable material

*2 wahlweise 10,50 oder 12,75 / choice of 10.50 or 12.75

*3 wahlweise M 10x30 oder M 12x35 / choice of M 10x30 or M 12x35



| | | |
|--|-----------------------------------|------------------------------------|
| Bestellbezeichnung: ordering code: | S355J2^{*1} C22 | 1.4404^{*1} 316L |
| • nur Zwischenstück adaptor only | SFCE-... | SFCE-X-... |
| • incl. Flanschhälften, metrischem Schraubensatz und O-Ring (Mutter und Schneidring) including split flanges, metric bolts and o-ring (nut and cutting ring) | SFCE-...M(M) | SFCE-X-...MX(M) |
| • incl. Flanschhälften, UNC-Schraubensatz und O-Ring (Mutter und Schneidring) including split flanges, UNC bolts and o-ring (nut and cutting ring) | SFCE-...U(M) | SFCE-X-...UX(M) |

DIN 3901
Bohrungsform W / Drill form W

| maximaler Betriebsdruck maximum recommended working pressure | S.A.E. Baugröße nominal flange size | Typ type | Abmessungen dimensions | | | | | | | | | | | Schrauben bolts | | Gewicht weight | | |
|---|--|-------------------|---------------------------|------|-------|------|-----|------|-----|------|------|----|-------|--------------------|--------------|-------------------|----|--|
| | | | A | A1 | B | C | D | E | F | G | I | SW | L | M | | | kg | |
| kg/cm ² | inch | | | | | | | | | | | | | | | | | |
| Schraube Festigkeitskl. 10.9 | Hochdruckreihe / High pressure | | | | | | | | | | | | | | metr. | unc. | | |
| 420 | 1/2" | SFCE 6001/S16 | M 24x1,5 | 31,8 | 12 | 40,5 | 56 | 18,2 | 48 | 53,2 | 8,5 | 24 | 8,50 | M 8x30 | 5/16 x 1 1/4 | 0,46 | | |
| 420 | 3/4" | SFCE 6002/L22 | M 30x2 | 41,3 | 19 | 50,8 | 71 | 23,8 | 60 | 61,0 | 7,5 | 30 | 10,50 | M 10x35 | 3/8 x 1 1/2 | 0,76 | | |
| 420 | 3/4" | SFCE 6002/S16 | M 24x1,5 | 41,3 | 12/17 | 50,8 | 71 | 23,8 | 60 | 59,2 | 8,5 | 30 | 10,50 | M 10x35 | 3/8 x 1 1/2 | 0,78 | | |
| 420 | 3/4" | SFCE 6002/S20 | M 30x2 | 41,3 | 16 | 50,8 | 71 | 23,8 | 60 | 61,2 | 10,5 | 30 | 10,50 | M 10x35 | 3/8 x 1 1/2 | 0,84 | | |
| 420 | 3/4" | SFCE 6002/S25 | M 36x2 | 41,3 | 17 | 50,8 | 71 | 23,8 | 60 | 63,2 | 12,0 | 30 | 10,50 | M 10x35 | 3/8 x 1 1/2 | 0,96 | | |
| 420 | 3/4" | SFCE 6002/S30 | M 42x2 | 41,3 | 24/18 | 50,8 | 71 | 23,8 | 60 | 64,0 | 13,5 | 36 | 10,50 | M 10x35 | 3/8 x 1 1/2 | 1,20 | | |
| 420 | 1" | SFCE 6003/S25 | M 36x2 | 47,6 | 20 | 57,2 | 81 | 27,8 | 70 | 72,2 | 12,0 | 36 | *2 | M 12x45 | 7/16 x 1 3/4 | 1,42 | | |
| 420 | 1" | SFCE 6003/S30 | M 42x2 | 47,6 | 24 | 57,2 | 81 | 27,8 | 70 | 74,0 | 13,5 | 36 | *2 | M 12x45 | 7/16 x 1 3/4 | 1,52 | | |
| 350 | 1" | SFCE 6003/S38 | M 52x2 | 47,6 | 24 | 57,2 | 81 | 27,8 | 70 | 90,0 | 16,0 | 46 | *2 | M 12x45 | 7/16 x 1 3/4 | 1,42 | | |
| 420 | 1 1/4" | SFCE 6004/S25 | M 36x2 | 54,0 | 20/30 | 66,6 | 95 | 31,8 | 78 | 79,2 | 13,5 | 41 | 14,60 | M 14x50 | — | 1,93 | | |
| 420 | 1 1/4" | SFCE 6004/S25-M12 | M 36x2 | 54,0 | 20/30 | 66,6 | 95 | 31,8 | 78 | 79,2 | 13,5 | 41 | 13,30 | M 12x45 | 1/2 x 1 3/4 | 1,93 | | |
| 420 | 1 1/4" | SFCE 6004/S30 | M 42x2 | 54,0 | 25/30 | 66,6 | 95 | 31,8 | 78 | 79,2 | 13,5 | 41 | 14,60 | M 14x50 | — | 1,93 | | |
| 420 | 1 1/4" | SFCE 6004/S30-M12 | M 42x2 | 54,0 | 25/30 | 66,6 | 95 | 31,8 | 78 | 79,2 | 13,5 | 41 | 13,30 | M 12x45 | 1/2 x 1 3/4 | 1,93 | | |
| 350 | 1 1/4" | SFCE 6004/S38 | M 52x2 | 54,0 | 30 | 66,6 | 95 | 31,8 | 78 | 83,2 | 16,0 | 46 | 14,60 | M 14x50 | — | 2,08 | | |
| 350 | 1 1/4" | SFCE 6004/S38-M12 | M 52x2 | 54,0 | 30 | 66,6 | 95 | 31,8 | 78 | 83,2 | 16,0 | 46 | 13,30 | M 12x45 | 1/2 x 1 3/4 | 2,08 | | |
| 350 | 1 1/2" | SFCE 6005/S38 | M 52x2 | 63,5 | 30 | 79,3 | 113 | 36,5 | 95 | 89,2 | 16,0 | 46 | 16,80 | M 16x55 | 5/8 x 2 | 3,03 | | |
| 350 | 2" | SFCE 6006/S38 | M 52x2 | 79,4 | 30/47 | 96,8 | 133 | 44,5 | 114 | 85,0 | 16,0 | 46 | 21,00 | M 20x70 | 3/4 x 2 1/2 | 3,40 | | |

Oberfläche: CR-6: auslaufend/Neu: CR-6 frei / surface: CR-6: phase-out/New: CR-6 free
*1 oder vergleichbare Güte / or comparable material

*2 wahlweise 10,75 oder 12,75 / choice of 10.75 or 12.75

*3 wahlweise M 10x30 oder M 12x35 / choice of M 10x30 or M 12x35